

20' x 50'

1,000 SF
1,300 SF with Optional Loft

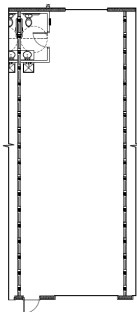
Pricing
\$255,000 - \$270,000

Unit Upgrades
Additional 300 SF loft area.....\$20/SF*

BendPak 9,000 lb Car Lift.....\$6,500

Industrial-grade
Large ceiling mounted fan.....\$7,500

Deducts from Base Model
Remove HVAC.....-\$2,750
Remove Bathroom.....-\$2,500



24' x 50'

1,200 SF
1,560 SF with Optional Loft

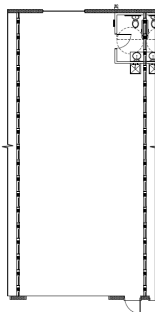
Pricing
\$290,000 - \$320,000

Unit Upgrades
Additional 360 SF loft area.....\$20/SF*

BendPak 9,000 lb Car Lift.....\$6,500

Industrial-grade
Large ceiling mounted fan.....\$7,500

Deducts from Base Model
Remove HVAC.....-\$2,750
Remove Bathroom.....-\$2,500



20' x 60'

1,200 SF
1,560 SF with Optional Loft

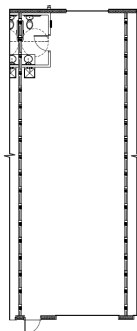
Pricing
\$290,000 - \$320,000

Unit Upgrades
Additional 360 SF loft area.....\$20/SF*

BendPak 9,000 lb Car Lift.....\$6,500

Industrial-grade
Large ceiling mounted fan.....\$7,500

Deducts from Base Model
Remove HVAC.....-\$2,750
Remove Bathroom.....-\$2,500



24' x 60'

1,440 SF
1,872 SF with Optional Loft

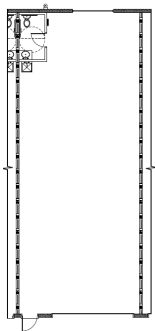
Pricing
\$345,000 - \$360,000

Unit Upgrades
Additional 432 SF loft area.....\$20/SF*

BendPak 9,000 lb Car Lift.....\$6,500

Industrial-grade
Large ceiling mounted fan.....\$7,500

Deducts from Base Model
Remove HVAC.....-\$2,750
Remove Bathroom.....-\$2,500



*Subject to change due to volatility in steel prices